

## ABOUT US

Animage is a pioneer in Cone Beam Tomography for veterinary use. In the market since 2010 and a large installed volume around the world, we provide your veterinary practice with the foremost 3-in-1 imaging solution in the industry. Differentiate yourself by adding a unique combination of Digital Radiography, Computed Tomography and Fluoroscopy to your equipment.

## OUR VALUES

-  Customer Commitment
-  Continuous Innovation
-  Robust Design and Build
-  Community Development

## CONTACT US



[www.animage.com](http://www.animage.com)



+1 925 416 1900



[info@animage.com](mailto:info@animage.com)



Animage, LLC

5165 Johnson Drive

Pleasanton, CA 94588

USA



WE PRESENT  
our latest product

# FIDEX-GT

BY  **ANIMAGE**



## OUR PRODUCTS

### FIDEX - GT

Computed Tomography  
Digital Radiography  
Fluoroscopy

### SOFTWARE

Computer-guided imaging  
Automated workflow  
(patient - archive)

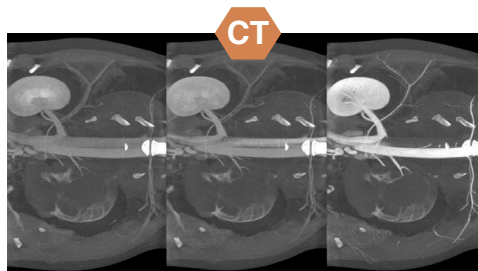
### AUTO BREATH CONTROL

ABC™  
Prevents motion artifacts  
Reliable high-quality scans  
(no prior experience needed)

### SCAN CONTROL

Automated patient positioning from  
preview function  
Computer controlled technique fac-

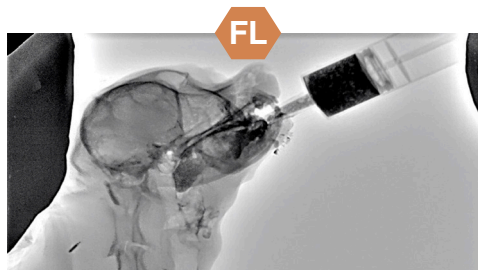
## FIDEX - GT



Wide slab acquisition  
32 cm diameter field of view  
72 cm scan range  
High-speed image reconstruction  
Settings and scan modes



Panel size 43 cm x 43 cm  
Digital enhancement  
High-resolution display  
Auto-save function



Large field of view  
Frame rates 5 to 30 fps  
Real-time display  
DSA for cardiac work  
VCR-like playback

## WHY FIDEX - GT

- + 3-in-1 scanner (CT, DR, FL)
- + Larger breeds possible
- + Better resolution
- + Switch between modalities
- + Auto Breath Control (ABC™)
- + Auto Contrast Tracking (Cine-CT)
- + Automated DICOM handling
- + Algorithm post-study acquisition
- + Wide patient table
- + Personal customer service

