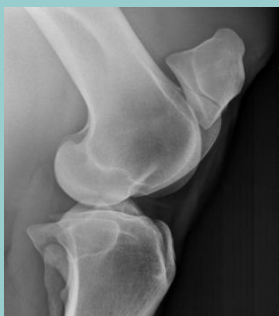


Draagbaar Radiografiesysteem

meX 20 lite - meX 20 - meX 40

Draagbare RX toestellen voor grote huisdieren.



meX 20 Lite



meX 20



meX 40



X-Ray Verachttert Digital nv

Bisschoppenhoflaan 662
2100 Deurne

Telefoon: +32 (0)3 239 05 79

Fax: +32 (0)3 218 50 61

E-mail: info@xrayverachttert.be

www.xrayverachttert.be

Specificaties :

- Vrije instelling van kV en mAs
- Instelbaar met anatomische programmatie
- 0.3 tot 50/100 mAs
- 1.2mm Focus met LED Collimator en Laser
- Beschikbaar met verschillende statieven



Model	PXP - 20 HF	PXP - 20 HF Plus	meX+40
Output			
Tube Vol./Current	90 kV / 20 mA	100 kV / 20 mA	100 kV / 35 mA
Voltage range	40 - 90 kV in 1 kV steps	40 - 100 kV in 1 kV steps	40 - 100 kV in 1 kV steps
mAs Range	0,3 mAs - 50 mAs 22 steps	0,3 - 50 mAs, 22 steps	0.4 mAs - 100 mAs 25 steps
Max. output	1,6 kW at 80 kV	1,6 kW at 80 kV	2.4 kW at 80 kV
X-ray Tube			
Application	Toshiba D - 124	Toshiba D - 124	Toshiba D - 124
Focal Spot	1,2 mm	1,2 mm	1.2 mm
HU capacity	20 kHU	20 kHU	20 kHU
Cooling rate	250 HU / sec	250 HU / sec	250 HU / sec
Collimator			
Min. Light field: 5 cm x 5 cm @ 1 m SID			
Max. Light field: 35 cm x 35 cm @ 65 cm SID			
Lamp	40W Halogen	50W Halogen	LED
Auto Timer	30 sec.	30 sec.	30 sec.
SID scale length	2 m	2 m	2 m
Laser Pointer	single laser	dual laser	Dual Laser
Power			
Input	220 / 240 V)	220 / 240 V	110 / 220 VAC
Frequency/phase	50 / 60 Hz, single phase	50 / 60 Hz, single phase	50 / 60 Hz, single phase
Voltage comp.	± 10 %	± 10 %	± 10 %
Features			
7 - segment LED read out reversible, Hand switch remote control function			
PROM Memory	4 APR	4 APR	8 APR
Weight	8,6 kg	9,8 kg	12,8 kg
Dimensions	230 x 192 x 340 mm	220 x 200 x 352 mm	250 x 195 x 355 mm

Voor verdere informatie, neem contact met :
X-Ray Verachtert Digital nv

Bisschoppenhoflaan 662
 2100 Deurne

Telefoon: +32 (0)3 239 05 79
 Fax: +32 (0)3 218 50 61
 E-mail: info@xrayverachttert.be
www.xrayverachttert.be