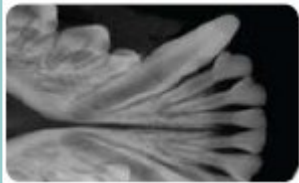




Apixia EXL V2

Dental CR



X-Ray Verachttert Digital nv

Bisschoppenhoflaan 662
2100 Deurne

Telefoon: 03/239.05.79

Fax: 03/218.50.61

E-mail: info@xrayverachttert.be

www.xrayverachttert.be

Bijzondere kenmerken :

- **Dentale CR** ontworpen voor de diergeneeskunde
- **Nieuwe EXL v2** met hogere resolutie en **meer detail !**
- **Automatisch** scannen en wissen van de plaatjes
- Beeld preview na enkele seconden
- Dentale plaatjes **#0 tot #5** (95x57mm)
- USB of Ethernet aansluiting
- **Diergeneeskundige Software**
- Lage onderhoudskosten, en service door Verachttert Digital

TECHNICAL SPECIFICATIONS

COMPUTER REQUIREMENTS*

Windows 10/Windows 8.1/Windows 8/Windows 7/
VISTA/XP (32, 64-bit)

USB 2.0 / USB 3.0 Port

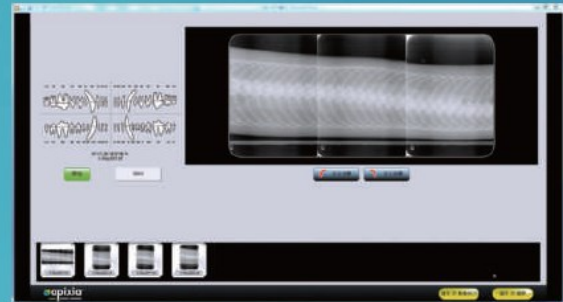
CD/DVD Drive

*Computer not included

EXL® PSP SCANNER SPECIFICATIONS

Dimensions	214 mm x 170 mm x 266 mm
Weight	5.1 kg (11.23 lb)
Voltage	AC 100-240V, 50-60Hz
Theoretical Resolution	22 lp/mm
Scan Time	5-8 seconds
Connection Type	USB 2.0 / USB 3.0 / Ethernet
Plate Sizes	Size #0, #1, #2, #3, #4, #5
Plate Erasing	Automatic
Software	TWAIN Compatible / DICOM 3.0

The APIXIA Imaging Software provides unique functions such as image stitching and image adjustment. Scanned x-ray images can be immediately viewed. The imaging software can be easily networked and comes with unlimited licenses.



INTERFACE

The software delivers dozens of powerful features, presented with simplicity and technological elegance that make the system a snap for each user.



Voor verdere informatie, neem contact met:

X-RAY VERACHTERT DIGITAL NV

Bisschoppenhoflaan 662
2100 Deurne

Telefoon: 03/239.05.79
Fax: 03/218.50.61
E-mail: info@xrayverachttert.be
www.xrayverachttert.be